



Tim Gredick
17 Lockwood Drive
Charleston City Marina
Charleston, SC 29401 United States

Toll-free 866-429-0957
Tel 843-577-3470
Tel (843) 577-3470
Fax (843) 577-3488
Email tgredick@hmy.com



GITANA

61' Wilbur Yachts Long Range Motor Yacht

- Year: 1986
- **Current Price: US\$ 599,000** (02/12)
- Located in Charleston, SC
- Hull Material: Fiberglass
- Engine/Fuel Type: Twin diesel
- YW# 15344-2392541

GITANA was designed by Ray Hunt, built by Wilbur Yachts in Maine and commissioned in 1989. The attention to detail from Wilbur Yachts, in building this vessel, was extensive with many custom features. GITANA offers three gorgeous staterooms, full beam salon, spacious galley and a large pilot house. She had been maintained to the highest standards and has been constantly upgraded over the years, showing much newer than her age! She must be seen to be appreciated.

Additional Specs, Equipment and Information:

Builder/Designer

Builder: Lee S. Wilbur Co.

Designer: Ray Hunt

Dimensions

LOA: 61 feet

LWL: 54.17 feet

Beam: 17.83 feet

Displacement: 87000 pound

Engines

Engine Brand: MAN

Engine(s) Total Power: 1500 Engine Model: D2842LE
HP

Engine Hours: 4000

Cruising Speed: 17 knots @ Maximum Speed: 20 knots
1800 RPM

Tankage

Fuel: 1400 gallon

Water: 300 gallon

Major Updates

ÿ

- Refit work done &ndash 2008/2009/2010
- New gauges, VDO tachometers, etc.
- 2F Control head
- New Mathis controls @ both stations
- Bridge remote throttles docking
- Painted hull awlgrip, flag blue
- SS stainless anchor
- Replaced Engine Room wire harness
- Replaced all electronics &ndash 2008
- Installed flatscreens and XM satellite sound system
- Updated/Reworked Heads; installed teak and holly sole, new commodes, shower stall, countertops and basin lighting
- New refrigerator, microwave, gas oven and basin in Galley
- Wallpaper throughout
- New AC digital control panels
- Halogen interior lighting throughout
- Solar tint on all exterior windows
- New Air Sea rescue raft &ndash 2009
- New outboard dinghy
- Resurfaced upper glass decks with contrasting non-skid
- Replaced rubber teak deck caulking
- Full new canvas, bimini, dinghy, cockpit and full bridge clear vinyl surround curtains
- Replaced battery banks / charger

Salon

- Insignia flat screen TV-with sunbrella cover
- Jenson CD player/stereo
- Bose speakers
- Digital A/C controls
- Port-Built in chart table/desk
- Navy blue exterior screen window shades

Galley

- Galley to starboard
- Lighting
- Stand up Norcold refrigerator and freezer
- Force 10 LP gas stove and oven
- Seaward safety shutoff solenoid at LP tank
- Broan exhaust fan
- Large SS sink
- Drop in Grunert galley freezer
- Incredible amount of storage both below and above the counter
- Dinette to port with comfortable seating for four

Pilot House

- All electronics new in 2008
- Soundproofed overhead ceilings
- Dinette aft to starboard with comfortable seating for three
- Chart table
- ZF single lever controls
- Hydraulic bow thruster
- Upper and lower search light
- Bennett trim tabs with indicator engine gauges
- 2 Furuno RD-30s
- 12inch Furuno display w/ black box radar, sounder, and GPS
- Furuno Nav Pilot-auto pilot
- Icom VHF
- A/C and D/C panels
- Tank tender
- Fire boy controls
- Engine starts and stops
- Horn
- Ritchie compass

Master Stateroom

- Centerline queen berth 6' by 5' wide
- Port and starboard night stands
- Dressing seat to port
- Pocket door
- Bose speakers
- Insignia flat screen TV
- En-suite head to starboard
- Sisal bound rug
- Full length mirror
- Hanging locker
- 12V lighting
- Ample storage under berth
- 5' foam mattress

- Individual reading lights

Master Head

- Shower/tub
- Teak and holly sole
- Raritan head
- White Corian counter with built in sink
- Port hole and hatch
- Fan
- Lighting

Guest Stateroom

- Over under bunks with a full sized bottom bunk
- Hanging locker
- A/C controls
- Port and hatch full length mirror
- Sisal bound rug
- 12V lighting
- Ample storage under berths
- 5" foam mattress
- Individual reading lights
- Bomar ventilating hatch

Guest Head

- Head to port
- Full sized shower
- Teak countertop with SS sink
- Mirror
- Teak and holly sole
- Raritan Head
- Port hole and small hatch
- Fan
- 12V lighting

VIP Stateroom

- " huge V-berth with filler
- 4 drawers
- Hanging locker
- Digital A/C controls
- 2 ports and a hatch
- Full length mirror
- Plenty of drawer and cabinet storage

- Sisal bound rug
- 12V lighting
- Ample storage under berths
- 5" foam mattress
- Individual reading lights

Hull and Deck

- Gitana's semi-displacement hull is solid, hand-laid, fiberglass of alternate layers of matt and woven roving. Thickness of the hull will vary from 3/8" to 1 1/2 " at high rudder port bearings, which require extra thickness. The superstructure is made up of hand-laid fiberglass and utilizes an end grain balsa core for structural rigidity and weight reduction.
- Navy Awlgripp Hull with red boot stripe
- Awlgripped topsides
- Teak Transom
- Teak swim platform
- 4 " SS cleats, bow bit, skene chocks
- Aluminum framed windows
- 6 SS port-lights with screens
- Rub rails and toe rails
- SS half-oval wear strip on rub rails
- Ample handholds and grab rails
- Molded quarterguard with SS half oval wear strip
- Stem iron (half oval stainless steel)
- Deck pipe for anchor line
- Sling tags
- Stainless steel bow rail
- Molded fiberglass cockpit sole
- Large lazarette access hatch
- Deckplate for emergency steering arm
- 30lb Bruce Plow anchor

Flybridge

- All New Electronics 2008
- Upper Helm
- " Furuno Nav Net with radar, GPS and sounder
- Engine gauges
- Bow thruster ZF single lever controls
- ZF remote docking system
- Hydraulic bow thruster
- Upper and lower search light
- Bennett trim tabs with indicator
- VHF Fire Boy controls
- Engine starts and stops
- Horn
- Ritchie compass
- Helm chair
- Port and starboard bench seating

- Bimini top with front enclosure
- Aft deck with wind screen
- 1989 Boston Whaler dingy with a 15 HP four stroke Yamaha
- Dingy awl-griped to match vessel hull color
- Custom cradle
- Marquipt davit

Cockpit

- Bimini top
- Teak sole
- Teak transom
- Large fender locker starboard
- Salon door centerline
- Engine room access port
- Bridge ladder port
- Teak swim platform

Electrical

- 110 V A/C, 12V and 24V D/C systems
- Electrical panels (located in the pilot house)
- Backlit electrical panels
- All marine grade wire and wiring
- 9 8-D AGM batteries
- 2 pairs of 2 batteries wired 24V engine starting
- 1 generator starting battery
- 4 house batteries
- 70A 24V alternator-port engine
- 12V alternator-starboard engine
- Completely bonded grounding system to a large master zinc
- 12V lighting
- 110 VAC dockside power with outlets
- 20 KW Westerbeke generator
- Xanterx inverter/battery charger with link 2000 monitor
- 50 AMP shore power cord

Engine Room and Mechanical

- Twin V-12 MAN D2824LE 750 HP engines with 4100hrs
- ZF transmission BW 165 with 2.0:1 ratio
- Racor fuel filter for mains and generator
- 20 KW Westerbeke generator
- Engine driven hydraulic pump on port engine for windlass and bow
- Thruster
- 25hp Vetus bow thruster

- Nilsson hydraulic windlass
- SS A-22 shaft
- Stainless steel struts and rudders
- Vibration dampening engine mounts
- Sound insulated engine space
- White gel-coated engine space
- Engine compatible exhaust system
- Raw water strainers
- Glendinning synchronizers
- Marine mufflers and underwater exhaust
- Hydraulic steering system
- Micocommander engine controls with remote handheld dockside control
- Oil change pump
- Fuel transfer pump
- WMS 350 gallons per day water maker
- Intec engine room monitor
- 4- zone five A/C units all with digital SMX controls
- 3-16,000 BTU units- salon, forward guest staterooms and pilot house
- 2-10,000BTU units-master stateroom and pilot house
- Tank tender-fuel and water monitor
- Spare props and spare SS shaft
- Marquipt dingy davit
- 1400 gallons of fuel in four tanks: 450 gallons forward, 2350 gallons port and starboard and 250 gallons in centerline tank

Disclaimer

The Company offers the details of this vessel in good faith but cannot guarantee or warrant the accuracy of this information nor warrant the condition of the vessel. A buyer should instruct his agents, or his surveyors, to investigate such details as the buyer desires validated. This vessel is offered subject to prior sale, price change, or withdrawal without notice.

Last Revised: Feb 29, 2012



> 3/4 Profile



> Bow



> Stern



> Fordeck



> Fordeck 2



> Fordeck 3



> Side Walkway Starboard



> Side Walkway Port



> Flybridge



> Helm



> Helm 2



> Helm 3



> Flybridge 2



> Aft Bridge Deck



> Aft Bridge Deck 2



> Aft Cockpit

> Pilot House



> Pilot House - Dinette



> Pilot House- Helm



> Pilot House 2



> Pilot House- Helm 2



> Galley



> Galley 2



> Dinette



> Salon



> Salon 2



> Salon 3



> Salon 4

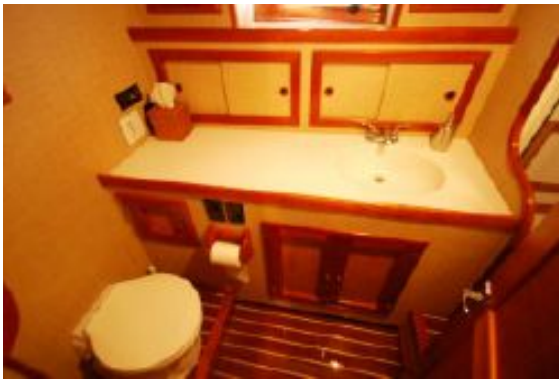




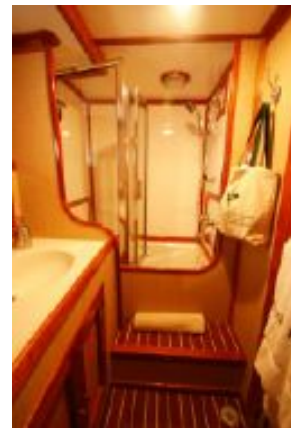
> Stairway to staterooms



> Master Stateroom



> Master Stateroom Head



> Master Stateroom Shower/Tub



> VIP Stateroom



> Guest Head



> Guest Head- Shower



> Guest Stateroom



> Guest Stateroom



> GITANA Plaque