



Tim Gredick
17 Lockwood Drive
Charleston City Marina
Charleston, SC 29401 United States

Toll-free 866-429-0957
Tel 843-577-3470
Tel (843) 577-3470
Fax (843) 577-3488
Email tgredick@hmy.com



RIFF RAFF

44' Ocean Super Sport

- Year: 1988
- **Current Price:**
US\$ 189,000 (06/11)
- Located in Charleston, SC
- Hull Material: Fiberglass
- Engine/Fuel Type: Twin diesel
- YW# 15344-2364834

"RIFF RAFF" is an extremely customized 44 ocean. CAY Marine did a complete refit in 1998 giving her a very clean look from the exterior and a modern feel in the interior. Her owner has done some major upgrades in the past few years like SAT TV, 2 5212 Garmin Units, 42" flatscreen in salon, new outriggers, new teak covering boards, new teak cockpit, single lever controls, dripless shaft seals, new teak helm chairs and much more. She also has under 100hrs on engine rebuilds making her a turn key boat for her next owner!

Additional Specs, Equipment and Information:

Builder/Designer

Builder: Ocean

Dimensions

LOA: 44 feet

Beam: 15.17 feet

Engines

Engine Brand: DETROITS Engine(s) Total Power: 900 Engine Model: 6-71
HP

Dimensions

Displacement:
36000

Engines

Power: 450
>Cruising Speed:
23.5
>Max Speed: 26.5

Tanks

Fuel: 480
>Fresh Water:
100

Salon

NEW 42" LG FLAT SCREEN TV (2007); CUSTOM TEAK TV CABINET (2007); UPGRADED CUSTOM HEADLINER; UPGRADED LIGHTING; UPGRADED VALANCES; INTERIOR REFIT IN 1999; UPGRADED SMX CRUISE AIR, AIR CONDITIONING UNIT; CUSTOM TEAK & HOLLY IN SALON ENTRY

- CARPETING
- UPGRADED BLINDS
- VCR
- COFFEE TABLE
- STEREO SYSTEM
- SOFA
- AIR CONDITIONING
- TELEVISION
- ENTERTAINMENT CENTER
- CHAIR
- FLOOR COVERING
- HEADLINER
- MIRROR
- SPEAKER
- AM/FM RADIO
- STOOL
- ICEMAKER

Head, Below Deck

GALLEY MAID HEAD TEAK & HOLLY FLOORING; SHOWER; SINK; UPGRADED SINK

HARDWARE; UPGRADED LIGHTING; UPGRADED WALLCOVERING

Galley/Laundry

UPGRADED CUSTOM FORMICA COUNTERTOPS (LOOK LIKE MARBLE); UPGRADED LIGHTING; TEAK & HOLLY FLOORING

- AIR CONDITIONER
- CLOTHES DRYER
- CLOTHES WASHER
- DISHWASHER
- REFRIGERATOR
- MICROWAVE OVEN
- PRESSURE FRESH WATER SYSTEM
- WATER HEATER
- SINK
- COUNTER
- VACUUM CLEANER

Master Stateroom

- AIR CONDITIONER
- TELEVISION
- SINK
- ENSUITE PRIVATE HEAD
- QUEEN BERTH
- LOCKER
- CARPETING
- HEADLINER
- CABINET

Guest Stateroom

- CARPETING
- TELEVISION
- (2) SINGLE BERTHS
- WALL COVERING
- MIRROR
- HEADLINER

Main Deck

- ANCHOR
- LIFE JACKET
- LIFE RING
- TRANSOM DOOR
- BOW PULPIT
- BOW RAIL
- WINDLASS

- (2) BOW LIGHTS
- NAVIGATION LIGHT
- RUNNING LIGHT
- TRANSOM LIGHT
- TOERAIL

Cockpit

- 2007 CAROLINA STYLE TEAK COVERING BOARDS
- 2011 NEW TEAK COCKPIT
- 7 ROD HOLDERS
- TEAK ROCKET LUANCHER

Hull

"RIFF RAFF" HAS BEEN COMPLETELY AWLGRIPPED; ALL HARDWARE HAS BEEN UPGRADED TO ALUMINUM; NAVIGATION LIGHTS ARE MOLDED-IN FOR THAT CLEAN CUSTOM LOOK; BEAUTIFUL CUSTOM HARDTOP; CUSTOM LADDER TO THE FLYBRIDGE; CUSTOM HAWSE PIPES,

Electrical System

- AD 197 BATTERY CONDITION GAUGE
- BATTERY CHARGER
- ALTERNATOR
- GENERATOR
- ELECTRICAL BONDING SYSTEM
- BATTERY BANK
- DC ELECTRICAL SYSTEM
- AC ELECTRICAL SYSTEM
- BATTERY
- DOCKSIDE ELECTRICAL CABLES
- DOCKSIDE SWITCH
- LIGHTING SYSTEM
- PANEL
- VOLTAGE METER
- ENGINE ROOM LIGHT

Engine Room

- TWIN, 485HP DIESELS IB, DETROIT DIESEL 6-71'S
- PORT ENGINE REBUILT (3/2010 100HRS)
- STARBOARD ENGINE REBUILD (3/2011 30HRS)
- SINGLE LEVER CONTROLS
- WATER COOLED TURBOS

- STAINLESS STEEL RISERS
- WALKER AIR SEPS
- FUEL FILTER
- EMERGENCY ENGINE STOP
- ENGINE HOUR METER
- BILGE PUMP
- BILGE BLOWER
- AIR INDUCTION
- ALTERNATOR
- TRANSMISSION
- HOLDING TANK
- ENGINE SYNCHRONIZERS
- PROPELLER
- SPARE PROPELLER
- SHAFT
- OIL TRANSFER SYSTEM
- FRESH-WATER COOLING SYSTEM
- ENGINE CONTROLS
- AIR CONDITIONER
- ENGINE MOUNTS
- WATER TANKS LEVEL GAUGE
- DRIPLESS SHAFT SEALS
- SUMP PUMP
- FUEL RETURN LINE
- FIRE EXTINGUISHER
- (2) FUEL TANKS
- START/STOP SWITCH
- BILGE PUMP
- FUEL SHUT OFF VALVE

Flybridge, Upper Deck

CUSTOM CAY MARINE HARDBTOP W/ ALUMINUM HARDWARE; TEASER REELS, NEW HELM ENCLOSURE 2007, NEW OUTRIGGERS; UPGRADED CUSTOM STEERING WHEEL; UPGRADED TRIM TAB CONTROL INDICATORS; UPGRADED CUSTOM BREAKER SWITCHES; REMOVED WINDSHIELD; CUSTOM TRACKING FOR THE EISINGLASS ENCLOSURE; CUSTOM UPGRADED LOCKING HARDWARE HANDLES; FURUNO NAVTEX NX-300 WEATHER ALERT; ACR REMOTE SPOTLIGHT

- 2007 NEW TEAK HELM SEATS
- 2007 SAT TV
- EPIRB
- ICOM VHF RADIO ('02)
- (2) 2009 GARMIN 5212 GPS/ RADAR/ COLOR SOUNDER WITH A CUSTOM ELECTRONICS BOX
- ROBERTSON AP 200 AUTOPILOT
- HORN
- COMPASS
- NORTHSTAR 951XD GPS ('02)
- COAST GUARD SAFETY PACKAGE

- INSTRUMENT PANEL

Disclaimer

The Company offers the details of this vessel in good faith but cannot guarantee or warrant the accuracy of this information nor warrant the condition of the vessel. A buyer should instruct his agents, or his surveyors, to investigate such details as the buyer desires validated. This vessel is offered subject to prior sale, price change, or withdrawal without notice.

Last Revised: Jun 27, 2011



> Helm



> Helm



> Cockpit



> Cockpit



> Salon



> New Flat Screen

> Salon



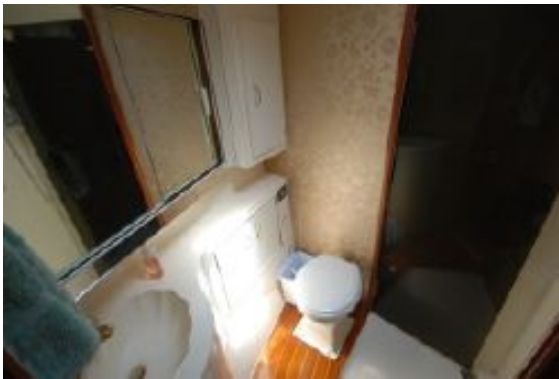
> Guest Stateroom



> Master Stateroom



> Guest Head



> Master Head