



Tim Gredick
17 Lockwood Drive
Charleston City Marina
Charleston, SC 29401 United States

Toll-free 866-429-0957
Tel 843-577-3470
Tel (843) 577-3470
Fax (843) 577-3488
Email tgredick@hmy.com



Houdini

71' Jim Smith Convertible

- Year: 1998
- **Current Price: US\$ 1,650,000 Tax Paid (06/11)**
- Located in Charleston, SC
- Hull Material: Fiberglass
- Engine/Fuel Type: Twin diesel
- YW# 15344-2361668

HOUDINI is a 71' JIM SMITH Custom Long Range International Travel, Fishing Machine featuring three extra large luxurious staterooms, each with a private head and roomy, stand-up showers. The Galley is up with a huge salon featuring a custom teak interior with matching wood grain. She features fully redundant systems like two chilled Air Systems, Dual Water Maker, exceptional stowage, exceptional speed, performance and range that rival even the best custom boats built today. She has always been meticulously maintained and constantly upgraded including her most recent at Bayliss Boat Works completed March 2008, including a new full refrigerated Mezzanine , teak deck, covering boards, paint and electronics upgrades&hellip

>She is...one of a kind, South Florida "PEDIGREE" Custom Boat and ready to go anywhere...and provide a much higher level of comfort and travel ability for the most demanding Owner and Crews!

Additional Specs, Equipment and Information:

Dimensions

LOA: 71 feet

Beam: 18.33 feet

Displacement: 75000 pound

Engines

Engine Brand: Detroit

Diesels

Engine Hours: 1000

Engine(s) Total Power: 1450 HP

Engine Model: DDEC

16V92TA

Tankage

Fuel: 2000 gallon

Water: 400 gallon

Accommodations

Houdini has a three-stateroom/three-head layout includes an owner's suite and guest suite amidships, with crew's quarters in the bow. Heads are finished with teak and holly flooring, and traditional varnished teak is used on all bulkheads, cabinets, rails and drawers. Instead of the traditional dinette, the boat's owner opted for an office suite that includes two large file drawers and a desk housing a computer and fax machine (both of which are routed to the boat's landline, cellular and satellite phone systems). A bookshelf, large chairs, bar stools and large granite bar complete with the traditional brass kick bar contribute to the antique look, but the 42" plasma TV, remote-control high/low table and pneumatic pop-up sofa.

Salon

Two luxurious, thick leather sofas are found to port, each with enough stowage below for everything...plus a custom Teak table with marble top and remote controlled hydraulic system that raises/lowers the table for the perfect height for dining or entertaining. Opposite and aft is a custom top loading ice bin with stainless insert fed by an Eskimo shaved ice machine. Directly forward are two matching designer leather recliners with a marble top end table, with drawer stowage. Furthest forward is the entertainment featuring a 42" TV hardwired to two separate DSS boxes. The audio end features DVD Player, a SONY 200 disk mega stowage Player, a VCR and a Yamaha Receiver with built in Surround Sound and Sub Woofer system. Behind the flat screen TV, which hinges out, opens up another huge amount of stowage&hellip

Galley

Forward to port is the Galley and Breakfast Bar with three brass and leather stools.

The Galley features built in stainless steel full upright refrigerator with separate freezer below hidden in the galley by matched grain teak paneling. Furthest outboard is a double wide sink. Everything in the galley has a home... custom built in holders for all of the pots and pans, silverware, china plates, glasses, coffee cups. Everything neatly stowed and nothing rattles when underway. There is stowage everywhere, custom spice pantry, a custom flip up "whiskey sipper" glass and carafes for half gallons of the finest to serve your guests.

- Full upright SS lined refrigerator with freezer below
- Miele four burner cook top stove
- Miele dishwasher
- GE Convection Oven/ Microwave
- Built in coffee maker

Office

"Houdini" features a perfectly dedicated, well appointed office area for a traveling boat. It allows one to keep up with the ships records and you can even slide in a little business on the side. It has fax and computer hook ups that are hard wired into the two SAT phones, as well as the PBX lines. Plus...there is a 56K Satellite transmission with compression software! Plenty of drawers and filing cabinets, reading lamps and a very comfortable lounge chair. There is a beautiful Teak and Holley deck in the galley and office area.

Guest Stateroom

Oversized upper and lower bunks with loads of stowage below the lower bunk. The full sized Cedar Lined hanging locker is more than ample with the drawer stowage beneath. The private head that features a shower stall, fresh water head, and a vanity. The full sized stacking washer and dryer are located here as well being locker doors.

Flybridge

- Featuring a teak helm pod with single lever electric STURDY controls.
- AIRCRAFT dual tach's
- Dual Turbo Boost
- Dual Pyrometers
- Dual DDEC Screens
- Stidd helm chairs
- Bridge aft rail rod rack for nine rods
- Two US9SP remote control electric teaser reels units.
- Two Pancakes teaser reels
- Forward of the helm is a giant 24-cubic-foot freezer with two access doors on the bridge. Forward to Starboard is a SS lined drink box/freezer
- L-shape seating forward and to port, with full rod stowage to side and below.
- EZ2CY three sided enclosures
- Fresh water washdown
- Overhead red and white lights
- Quartz spreader lights
- Separate bridge power supply and electrical panels
- 2008 Northstar 6100I w/ siruis weather
- 2008 Furuno Color sounder
- 2008 Robertson AP20 Auto Pilot
- Northstar 961GPS w/ 926 software
- Northstar 951GPS
- Stevens Sea 322 Sideband Radio
- Icom VHF Radio w/ remote mike & overhead speaker
- Stevens Sea VHF Radio w/ remote mike & speaker
- Two U.S. Cell Phones
- KVH Trac Phone - Sat Phone Immarsat
- Seatel Wave Call Sat Phone, Global Star
- Furuno MX500 Weather Data
- ACR Power Control Search Light

Deck & Hull

- Teak Toe Rails
- Ideal Windlass
- Removable Polished Stainless Bow Pulpit
- Anchor Locker w/two built in Fortress anchors
- Fresh water washdown in anchor locker
- Flush Mount Davit for bow &ndash removed and currently in storage
- Flush mount removable cradle for bow
- Two Blue underwater lights
- Two SANDS four blade props
- Two spare five blade props
- Removable polished stainless steel bow pulpit - Anchor Locker on Bow has Freshwater

Cockpit

The "HOUDINI" was taken to Bayliss Boat Works and the entire cockpit was completely upgraded including new teak deck with bull nose corners, new teak mezzanine deck, new coverboards, new raised mezzanine deck and lounge to port. To starboard, below the cushion is a custom tackle locker with a Gaggennau grill and polished stainless steel back splash. Below the mezzanine seating (custom seaworthy cushions) is a large stainless steel Top Loading bait freezer. There are two separate stainless steel large refrigerated bait coolers to port, both with dual stainless removable bait trays. Next inboard is the access to the engine room. In front of the salon door is a stainless steel refrigerated drink box with starboard dividers. Both bait box's and the drink box have thermostats to make them all but freeze too. Furthest to starboard is another stowage locker. Pipewelders added a custom flybridge overhang extension that not only accentuates her graceful lines, it provides total shade across the mezzanine deck.

- Offset Stanchion with Scoponich Fighting Chair
- Rocket Launcher
- Live Bait Well in deck
- Refrigerated Fish Box in deck
- Drink Box with Freezer
- Wide tuna door
- Dive tank stowage racks for six bottles and a BROWNIE dive compressor in the Aft lazarette
- Custom transom mounted TUNA TUBES with quick disconnects for easy removal.
- Six flush mounted rod holders, four more flush mounted rod holders in the side pilasters
- Custom gaff stowage tubs
- RUPP triple spreader riggers
- RUPP Center Rigged Spreaders
- Fresh water washdown, dockside phone, TV and two separate 50AMP shore service cords and a Palm Beach custom ladder to bridge
- Offset Stanchion with Scoponich Fighting Chair
- Rocket Launcher
- Removable polished stainless steel bow pulpit
- Anchor Locker on Bow has Freshwater Washdown and built in 2 fortress anchors
- Electrical Systems
- 12 Volt and 24 Volt DC Systems

- 110 Volt AC System
- Two 20-kilowatt Alaska Diesel generators
- 50AMP shore service cords
- 2 Glendennining Cablemasters
- Eight -8D Gel Batteries 24 volt systems main
- Two 12 volt Batteries for gen sets
- Two 12 volt Batteries for house
- DUAL C-POWER 50 amp BOOSTERS
- 110 Volt converter 24 volt to 12 volt

Engine Room

Twin DDEC 16V92TA Detroit Diesels at 1450 hp. They were rebuilt by Dave Osberg & "DMS DAVE" in Palm Beach, with about a 1000hrs since the overhaul.

Cockpit entrance below Mezzanine seating and below galley deck into the pump room.

- DDEC EMC DATA Screens in the engine room plus a full set of manual gauges
- Start/stop button and manual overrides at the bridge and in the engine room
- Dual fuel filters with vacuum gauges for both engines
- Updates risers by Deangalo
- Dual Airseps
- 110VT oil change system for mains, gears and both generators. There are two 50 gallon fresh oil reserve tanks and one 50 gallon used oil tank aboard… enough for two complete oil changes plus
- Polished/Mirrored stainless overhead each engine
- Head Hunter fresh water heads
- Dual Head Hunter fresh water pumps with accumulator tanks
- Two Filtration Concepts water makers that can process 2,400 gallons per day, or 100 gallons per hour
- ESKIMO 600lbs per day shaved ice machine
- Fresh water filters
- Salt water filter
- Two three-ton Cruiseair chillers, either one of which could cool the boat on its own.
- Air Compressor
- BROWNIE dive tank compressor
- Fuel transfer pumps, dual
- Four fuel tanks - 420 gallons forward, 1100 gallons Main and (2) 240 gallon saddle tanks all with sight gauges
- Power Steering
- Lynco electric trim tabs
- Sea chests with dual pickup's for each engine
- Dripless shaft seals
- Separate breaker panel in engine space for all systems
- AC and DC lighting throughout
- Automatic fire control system
- Thermostat controlled massive engine room blowers
- Built in tool box
- Telephone/Intercom system
- High water alarm system

- Built-in spare parts stowage shelves

Performance

At 22 knots and 45 gallons per hour, the boat gives a range in the neighborhood of 1,000 nautical miles

Disclaimer

The Company offers the details of this vessel in good faith but cannot guarantee or warrant the accuracy of this information nor warrant the condition of the vessel. A buyer should instruct his agents, or his surveyors, to investigate such details as the buyer desires validated. This vessel is offered subject to prior sale, price change, or withdrawal without notice.

Last Revised: Jun 16, 2011



> Cockpit



> Cockpit 2



> Cockpit 3



> Flybridge



> Flybridge 2



> Flybridge 3



> Flybridge seating



> Flybridge Freezer



> Flybridge 4



> Salon



> Salon 2



> Salon 3



> Galley



> Galley 2



> Bar

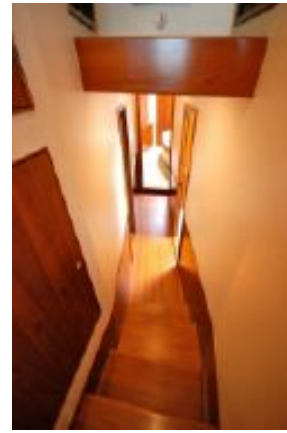


> Office





> Office 2



> Companionway



> Guest Stateroom



> Guest Head



> Guest Stateroom Port



> Guest Head- Washer Dryer



> Master Stateroom



> Master Stateroom 2



> Master Head



> Engine Room



> Engine Room 2



> Port Generator



> Starboard Generator



> Pump Room Starboard

> Pump Room



> Pump Room Port