



Viking Sport Cruisers Express – No Name 58 VSC

Make:	Viking Sport Cruisers	Boat Name:	No Name 58 VSC
Model:	Express	Hull Material:	Fiberglass
Length:	58 ft	Number of Engines:	2
Price:	USD 799,500	Fuel Type:	Diesel
Year:	2006	Number:	3545565
Condition:	Used		
Location:	Palm Beach Gardens, FL, USA		

No Name 58 VSC

This is a common rail engine. One owner, captain maintained vessel with updated electronics. Exceptionally clean!

HMY Yacht Sales, Inc. - Tim Gredick

Charleston, SC/Georgia Office, 17 Lockwood Drive, Charleston City Marina, Charleston, SC 29401, USA

Toll-free: 866-429-0957 Tel: 843-577-3470 Tel: (843) 577-3470 tgredick@hmy.com

<http://www.yachtworld.com/hmyyachtsales>

Tanks

Fuel: 685

Fresh Water: 125

General Interior & Decor

The interior of this boat shows new. The high gloss cherry wood work accented by Corian countertops, luxurious soft goods is truly stunning! The oversized dinette table and seating area is opposite the galley, making it perfect for dining or relaxing while watching a movie through the Bose home theater system

Salon

- Bose home theater system
- Coffee table
- TV, 26" LCD & DVD

Galley

- Garbage disposal
- Combination washer & vented dryer
- Overhead cabinets

Midship Master Stateroom

- AM/FM stereo/CD/DVD
- 19" LCD TV
- Ensuite head
- Opening port lights

VIP Stateroom

- Large double bed w/ drawers below
- Opening port lights
- AM/FM stereo/CD/DVD
- 19" LCD TV

Guest Stateroom

- Opening port lights

- Upper & lower twin berths
- AM/FM stereo/CD/DVD
- 19" LCD TV

Main Helm

- Hardtop w/electric sliding roof (new '09) with custom cover
- Furuno Nav Net Plotter/Radar
- Furuno Navnet 3D Plotter/Radar
- Simrad autopilot
- Furuno RD30 depth & speed
- Clarion AM/FM CD Player at Helm
- ACR Spotlight
- Electronic engine controls w/ synchronizers
- Rudder angle indicator
- Tilt steering wheel
- VHF radio
- ICOM IC-M602
- Windshield defogger
- (2) windshield wipers
- Side Power Electric Bow thruster

Cockpit

- Teak laid cockpit, bathing platform & stairs
- (2) Voltage stabilizer transformers
- Cockpit speakers w/ amplifier
- (2) Glendinning cablemasters
- Generator 21.5kW/60Hz with soundshield
- Cockpit table
- Fender storage
- Shower hot/cold
- Garage w/ electric winch for 10'2" RIB tender
- Wet bar w/refrigerator, icemaker, sink & grill

Deck & Exterior

- Blue painted hull
- Foredeck freshwater wash down
- Foredeck sunpad cushions
- Foredeck cushion cover
- Exterior seating in custom sunbrella

Mechanical & Electrical

926 Hours on generator

- Bowthruster
- Dripless shaft logs
- Fire protection system, automatic & manual
- Holding tank w/ dockside, overboard pumpout & gauge
- Oil change system for engines, transmissions & generator
- Power assisted hydraulic steering system
- Central vacuum system
- Generator gauge package
- (2) Isolation transformers
- Searchlight, twin beam
- Water-flow failure light & alarm at main helm
- Anchor windlass

Disclaimer

The Company offers the details of this vessel in good faith but cannot guarantee or warrant the accuracy of this information nor warrant the condition of the vessel. A buyer should instruct his agents, or his surveyors, to investigate such details as the buyer desires validated. This vessel is offered subject to prior sale, price change, or withdrawal without notice.

Photos



Photo 1



Renie Vee



Bow Profile



Photo 26

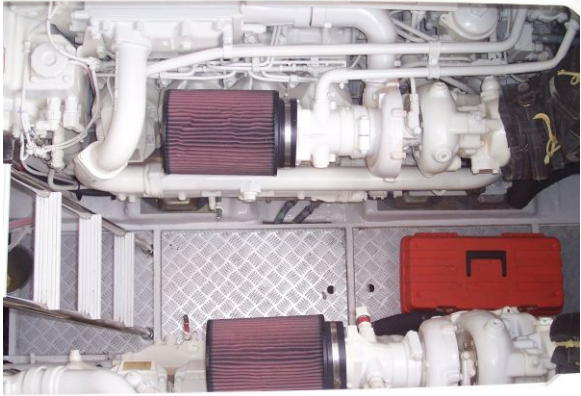












Engine Room